

# Week 5 Thursday 21.05.2020

Today we are learning to:

The materials I will need:

- A computer (if you have one)
- Paper (book) and a pencil
- Calculator for checking your math if you need to.

**When searching for anything online ensure that you follow cyber safety rules and get your parent's permission.**

**9:00 – 9:30**

## **SPELLING**



**Cut out letters in a magazine, newspaper or junk mail to spell 10 of the spelling words.**  
**Prefixes — 'di', 'dia', 'de'**

dissect	dialect
dilate	decay
digest	decide
direct	deport
divert	delay
diameter	depend
diagonal	debrief
diagram	develop
diagnosis	depress
dialogue	deploy

**9:30 – 10:00**

## **Quiet Reading**

Choose any text to read for enjoyment. Find somewhere comfortable to read. Please remember to keep filling in your reading log.

**Go to Sunshine Online**

**Username – jinibara**

## Password - jinibara



**HOT TIP** - Parents – you can talk to your child about their reading if you have time! Ask about the characters, what is happening in the story, what they are enjoying.....

**Stop and enjoy a fruit break.  
Play a game of musical statues**

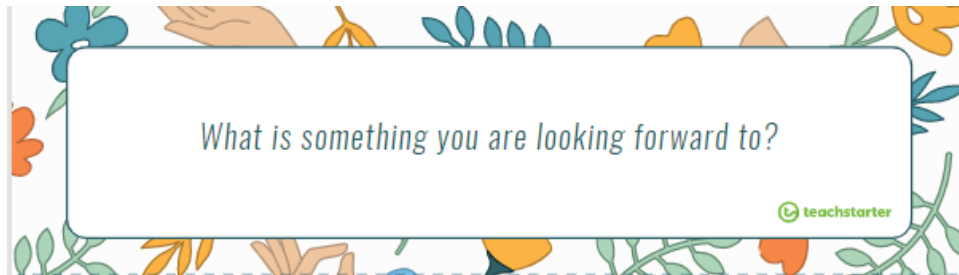


**10:00 – 10:30**

## Daily writing task

When completing your daily writing task make sure you are:

- Writing at least a paragraph to answer the question
  - Using capital letters and full stops
- Typing your response to your teacher or writing in your neatest handwriting
  - Check for spelling (you could look up words you don't know)



**10:30 – 11:00**

**English**



### Local store and post office 1 – Panther watch advertisement

Read this evidence and highlight or circle your responses below.

1. How reliable is this evidence? At first glance, I think this evidence is:

- a. Reliable
- b. OK
- c. Unreliable

Reason?

- a. This is a well-designed advertisement with good drawings.
- b. The people in the advertisement look quite honest.
- c. Advertisements often exaggerate and twist the truth.

### 2. Check the evidence.

The low-angle shot of the black panther:

- a. Makes the panther look big and frightening.
- b. Makes the panther look small and frightened.
- c. Makes the panther look cuddly.

'No guarantee' tells me that:

- a. The organisers know that the black panther will appear.
- b. You won't get your money back if it rains.
- c. The organisers aren't sure whether the black panther will appear or not.

### 3. The SAFE test

Panther watch advertisement at the local store	
Source	Reliable source (official) OR not reliable
Attitude	Positive attitude OR negative attitude OR none (e.g. scientific research)
Facts	Facts OR assertions (not as reliable as facts)
Emotions	Strong feelings/emotions (maybe biased/unreliable) OR neutral/no or only slight emotions expressed

**OVERALL:** List all the facts that are provided by this advertisement that could help you find the black panther...



I hope you haven't listed any facts, as this evidence contains none that are useful to you! It is not from a reliable source and is biased. The local store wants to make money from tourists but may not deliver a black panther sighting 😊

Stop and have something to eat

Play a game of ROCK, PAPER, SCISSORS



**12:00 - 1:00**

**Maths**

Warm Up

# 101 and Out

**Big Idea:** Number and Place Value

**Suits:** Years 3-7

**Materials:**

A regular 6-sided dice



North Coast Region

Mathematics



## Instructions:

- Students draw up an empty table for recording, as shown
- Explain that the two columns are for showing TENS and ONES

## Whole class game:

- The teacher rolls the dice, eg. 3
- Students write the digit into one of the cells of the top row of the grid
- The dice is rolled a second time and students add this digit into one of the cells of the second row.
- Continues until six rolls have been made and students have one digit in each row.
- Players now add a zero place holder in each of the empty ONES cells.
- Players add the 2-digit numbers

The player whose total score is nearest to 100 without going over 100 wins the game. (Scores of 101 and more are OUT)

101 and out

3	
	5
	6
2	
1	
	4

101 and out

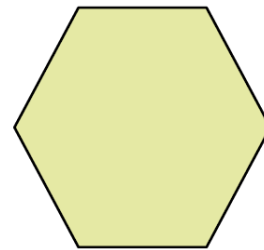
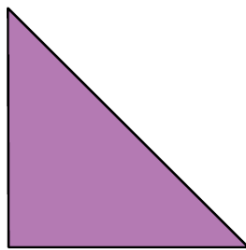
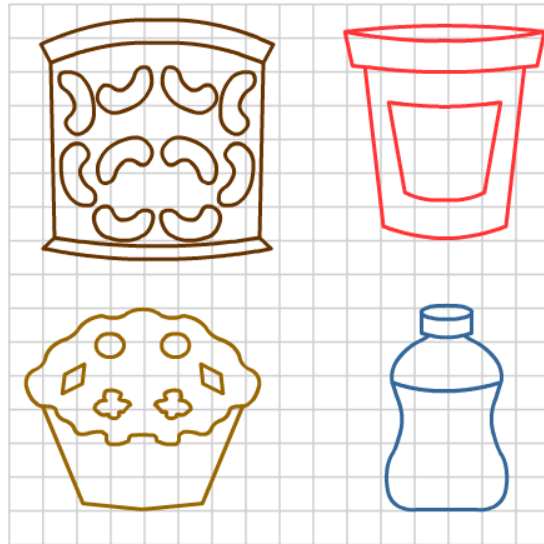
3	0
	5
	6
2	0
1	0
	4

total 75

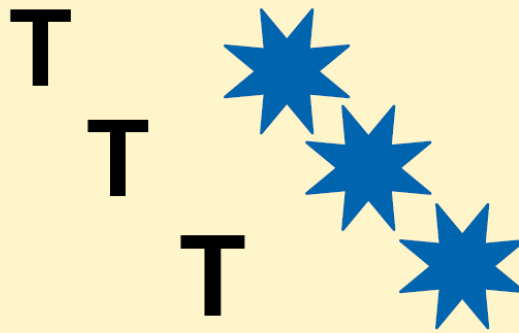
## Maths Lesson

Exploring translational symmetry

Draw a line on each shape to show the line of symmetry. Some shapes may have more than one line of symmetry.

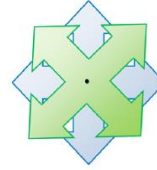
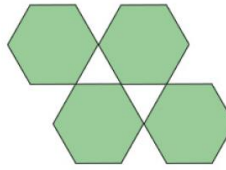


A shape has **translational symmetry** if an outline of the shape can be translated (slid) to a new position. The translated image is the same shape and size as the original shape. The image and the original shape face the same direction, for example, all copies of the stars below have two points at the bottom of the image. Both patterns shown use translational symmetry.



What is happening to the original shape or design in each of the patterns?

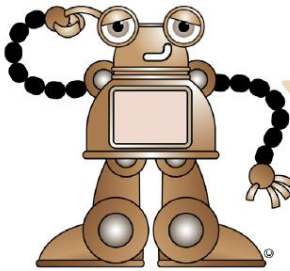
Which of these designs shows translational symmetry? (tick the design)



### **Answer these questions**

1. How does the design show translational symmetry?
2. Have you ever used translations before? Where?
3. Search around your house for an example of translation symmetry. Draw or describe it.

### **Creating a design using translational symmetry**



You will need 2–4 blocks, paper and colouring pencils to complete the next activity. If you don't have blocks, you could draw 2D shapes and cut them out.

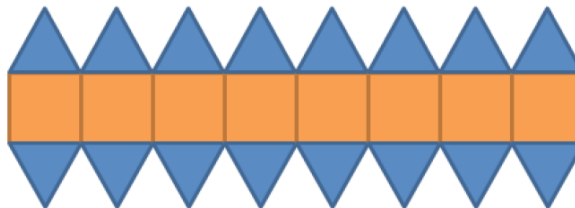
Experiment with blocks to create shapes or combinations of shapes.

- a. Use 2–4 blocks to create a simple design.
- b. Trace around the design and colour it.
- c. Slide the blocks from their original position to a new position.
- d. Trace and colour the design again.
- e. Continue this process to create a translational symmetry pattern.

For example:



*Original design*



*Translational symmetry design*

## 1:00 – 1:30 – Music



Choose an activity off the music grid to complete.

**Stop and have some lunch. Enjoy a conversation with your family. Do 15 star jumps and three yoga poses.**

## 2:00-3:00

### HASS - Humanities and Social Science

#### 1. What is the difference between rules and laws?

Circle the correct response.

No-one enters my sister's room without her permission.      **rule   law**

Homework is to be handed in every Friday.      **rule   law**

Don't injure other people.      **rule   law**

Don't smoke cigarettes in a school.      **rule   law**

If you hit the cricket ball over the fence, it's six and you are out.      **rule   law**

Wear a helmet when riding a bicycle on the street.      **rule   law**

Australian Laws deal with many issues. Think about each issue or offence below and re-write it into the table under the correct law it matches. Some have been done for you:



speeding	carrying a weapon in public	wearing a helmet
rioting	importing goods	trespass
vandalism	radioactive waste disposal	littering
waste disposal	food handling and hygiene	importing flora and fauna
passports	wildlife conservation	theft
seat belts	public water supply	driving without a licence
<b><u>Road Laws</u></b> <ul style="list-style-type: none"> <li>• Speeding</li> </ul>	<b><u>Health Laws</u></b> <ul style="list-style-type: none"> <li>• Wasted disposal</li> </ul>	<b><u>Environmental Protection Laws</u></b> <ul style="list-style-type: none"> <li>• Radioactive waste disposal</li> </ul>
<b><u>Public Order Laws</u></b> <ul style="list-style-type: none"> <li>• Protest marches</li> </ul>	<b><u>Property Laws</u></b> <ul style="list-style-type: none"> <li>• Trespass</li> </ul>	<b><u>Customs and border protection laws</u></b> <ul style="list-style-type: none"> <li>• Importing goods</li> </ul>